



Turn to the experts

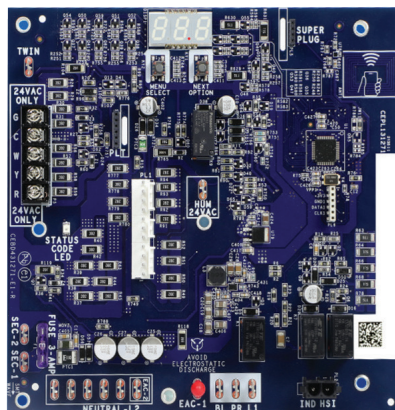
FURNACE CONTROL BOARD WITH NFC TECHNOLOGY QUICK START GUIDE

The Future is a Tap Away

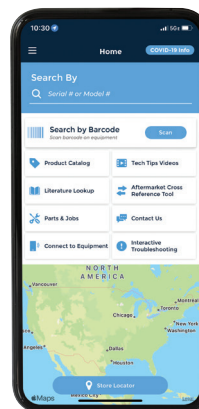
We are excited to introduce our updated industry-leading Service Technician app with patent-pending Near Field Communication capability. Easier and faster installation, troubleshooting, and servicing of our gas furnaces are now just a tap away.

Experience the Difference

Utilize this guide with your smartphone and an NFC-capable furnace control board to experience firsthand what a difference these enhancements will make for technicians in the field.



Control Board
with integrated NFC



Grab your
Smartphone!

What is NFC technology?

Near Field Communication Technology, or NFC is the same technology used for credit card “tap to pay” systems and paying via a mobile phone.

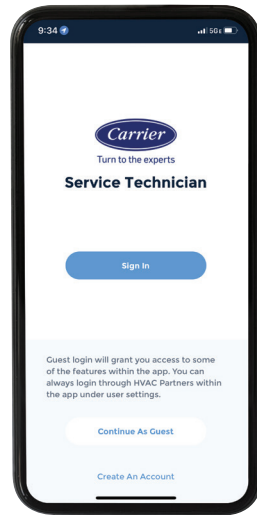
Launching initially in our Comfort™ Series gas furnaces, we are incorporating this technology into our furnace control boards. NFC capability combined with our improved tech app means previously time-consuming and labor-intensive jobs can now be completed with your smartphone and a series of quick, easy steps.



Let's Get Started

STEP 1

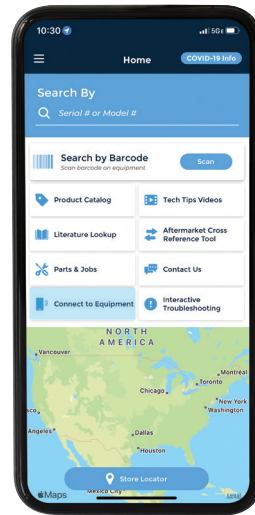
Download the free Service Technician App from your smartphone's Apple or Google Play app store.



STEP 2

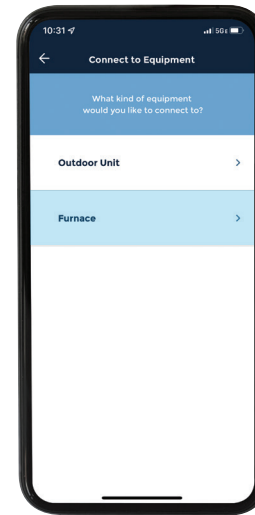
Sign in if you're an existing user, *Create An Account*, or *Continue As Guest*.

NOTE: You can perform all NFC functions as a guest.



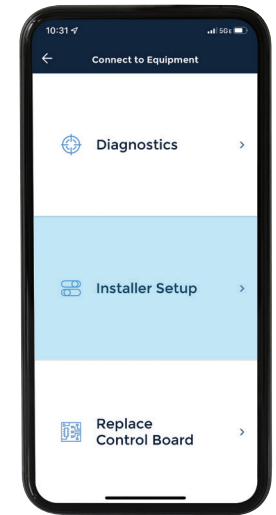
STEP 3

Select *Connect to Equipment*.



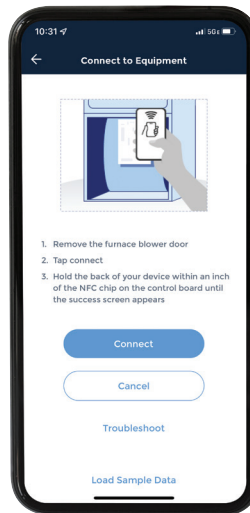
STEP 4

Select *Furnace* to get to Furnace Menu.



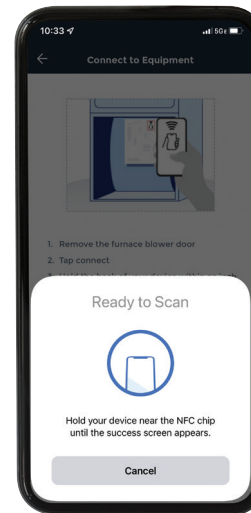
STEP 5

Select *Installer Setup* to walk through the installation process.



STEP 6

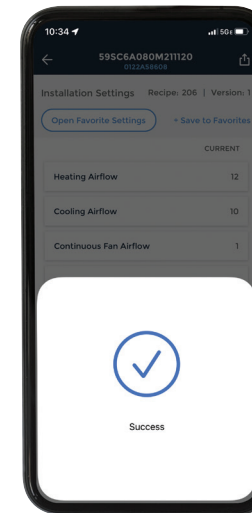
Select *Connect*.



STEP 7

Tap and hold your device within one inch of the NFC chip on the control board until the success screen appears.

NOTE: This may take up to 10 seconds.



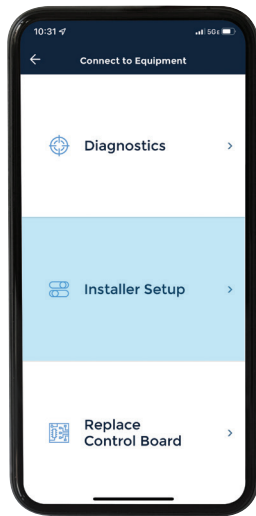
STEP 8

Success!

Now let's browse your installer settings.

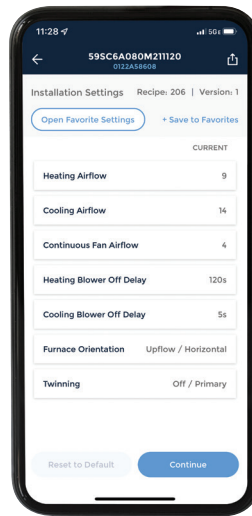
Installer Setup

Review these **Installer Setup** app screens to become familiar with all of the setup features including: heating and cooling airflows, blower off delays, twinning settings, and more.



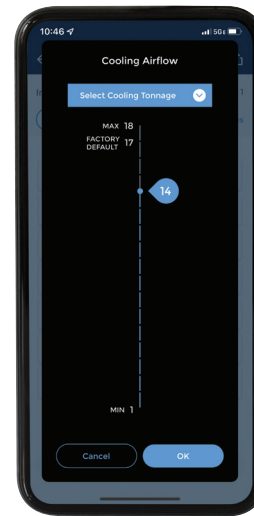
INSTALLER SETUP

Click on **Installer Setup** to adjust the unit's setup parameters when installing a new furnace.



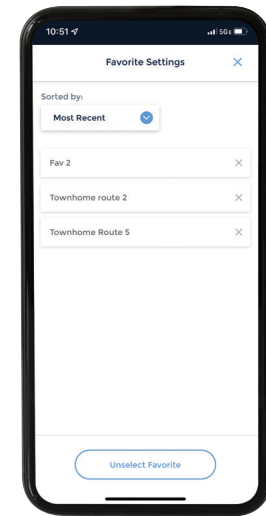
SETTINGS MENU

To complete setup, click on each parameter and follow the easy-to-use screens.



ADJUSTING AIRFLOWS

To adjust airflows simply slide the blue bubble up or down as needed and select **OK**. For cooling you also have the ability to select a tonnage from a drop down menu.

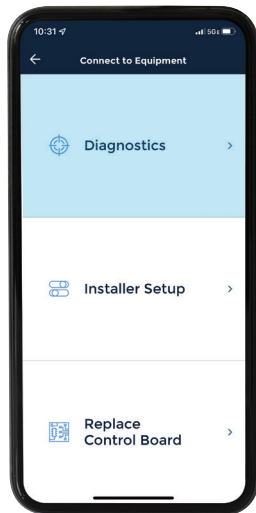


FAVORITE SETTINGS

You can also save your "favorite" settings for future use within the app. For example, settings can be saved and named after model or floor plans for residential new construction.

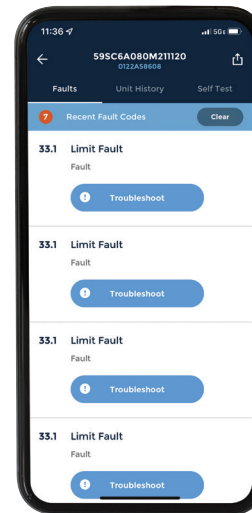
Diagnostics

Review these **Diagnostics** app screens to evaluate *Fault Codes* and *Unit History* data, or run the *Component Self Test*.



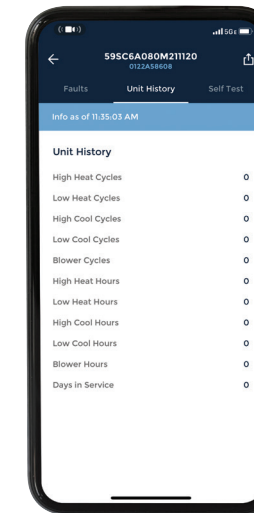
DIAGNOSTICS

Click on **Diagnostics** to quickly access performance history of a unit.



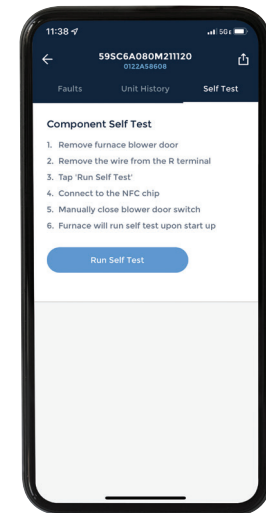
FAULT CODES

The **Fault Codes** option will give you the unit's code history as well as any active faults the unit might be experiencing.



UNIT HISTORY

The **Unit History** option reports the number of operation cycles and hours the unit has operated.

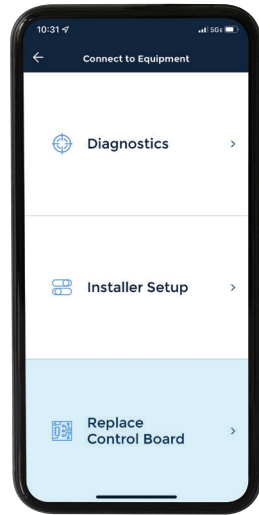


SELF TEST

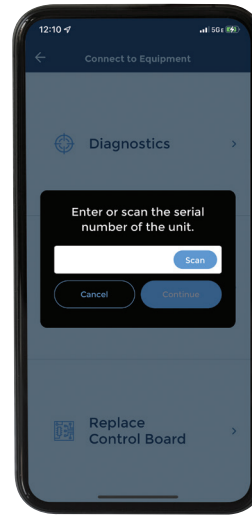
The **Component Self Test** option tests critical component functionality to assist with troubleshooting upon power-up.

Replace Control Board

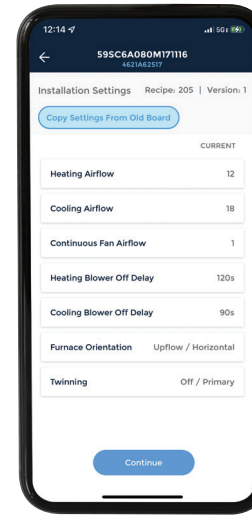
Review these [Replace Control Board](#) app screens to learn how you can simply and quickly program a replacement board.



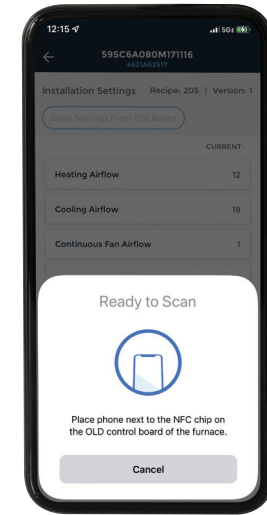
REPLACE CONTROL BOARD
Click on [Replace Control Board](#) to replace a faulty control board in just a few simple steps.



SCAN SERIAL NUMBER
Enter or scan the serial number of the unit.



COPY SETTINGS
Then select [Copy Settings from Old Board](#).



CONFIRMATION
Finally confirm settings and follow instructions on screen to complete.

How to Learn More

Simply scan this QR code to visit our NFC landing page on HVACpartners. Here you will find:

- Furnace Control Board Training Video
- App Links
- FAQs



[HVACpartners.com](https://www.hvacpartners.com)



Turn to the experts

[carrier.com](https://www.carrier.com) 1-800-CARRIER
©2023 Carrier. All Rights Reserved.

Manufacturer reserves the right to discontinue, or change at any time, specifications or designs without notice or without incurring obligations. Third-party trademarks and logos are the property of their respective owners.

01-858-663-01
Rev. 02/2023